



TO LET

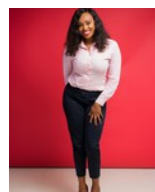
GLA: 92,000m² | KSh400 per m²

Web Ref: CL13

GLA	92,000m ²
Lease Period	5 year plus
Available From	Immediately
Zoning	Commercial

Two Rivers Mall

Two Rivers Development is a vision 2030 accredited development that sits on 102 Acres of Master- planned and Serviced land. The land has a total of 1.3 million square metres of develop able bulk on 47.4 acres of land. The land comprises of serviced plots for commercial, residential and mixed use as well as recreational and utility plots, landscaped areas and infrastructure routes. The Development is anchored by the Two Rivers Lifestyle Centre that sits on approximately 9.7 acres and has been operational since February 2017. Two Rivers Lifestyle Centre is Jointly owned by Two Rivers Development and Old Mutual Properties. The Development also houses City Lodge Hotel which opened its doors in March 2018 and...



Catherine Ng'ang'a

Office Number: (254) 709 113 000
Cell: +254 707844039
Email: cnganga@broll.co.ke



All rentals / prices quoted exclude V.A.T