



**TO LET**

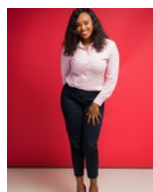
GLA: 39,000m<sup>2</sup> | KSh400 per m<sup>2</sup>

Web Ref: CL9

<b>GLA</b>	39,000m <sup>2</sup>
<b>Lease Period</b>	5 year plus
<b>Available From</b>	Immediately
<b>Zoning</b>	Mixed Use
<b>Security</b>	True
<b>Open Parkings</b>	600
<b>Covered Parkings</b>	400
<b>Basement Parking</b>	200
<b>Parking Ratio</b>	4 bays / 100 m <sup>2</sup>
<b>Power 3 Phase</b>	Yes

**Garden City Mall**

Garden City Mall is part of Kenya's first integrated Residential, Retail and Office Mixed-use development. Garden City is projected to be a major hub for the Northern Nairobi catchment, which previously had no modern retail, office or leisure facilities. Garden City Mall opened its doors to the public on 28th May 2015 with 33,500sqm of retail space spread across 3 floors ; and is home to close to 100 stores offering a wide selection of International and the best Kenyan brands. List of features: o Power Saving elevators and escalators o State of the Art 24 hours CCTV surveillance and computerized access control systems o Secure and ample parking o ICT and fiber backbone infrastructure o Backup...



**Catherine Ng'ang'a**

Office Number: (254) 709 113 000  
Cell: +254 707844039  
Email: cnganga@broll.co.ke



All rentals / prices quoted exclude V.A.T